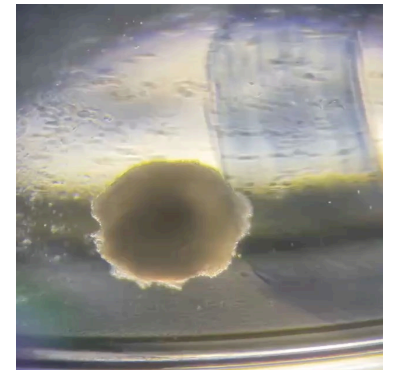
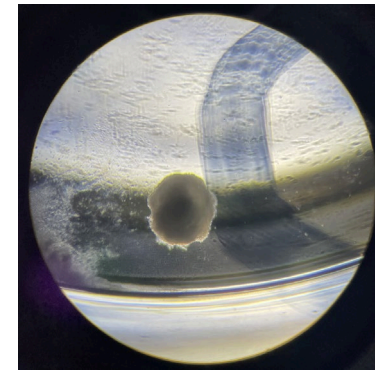
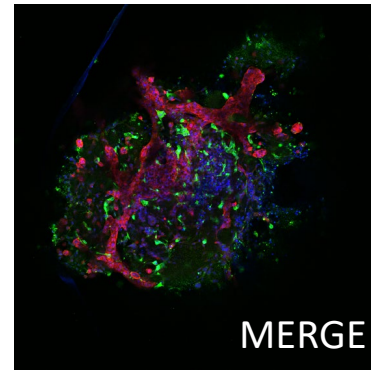
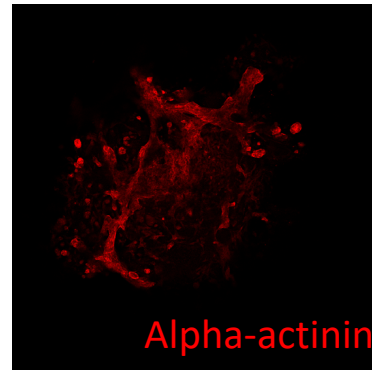
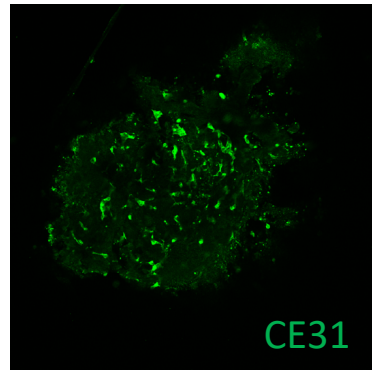
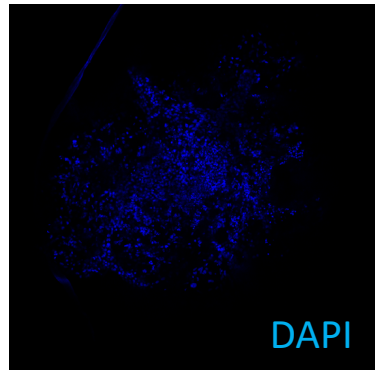
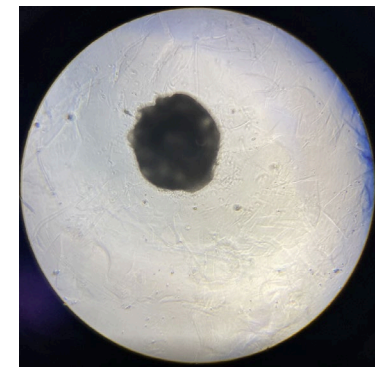
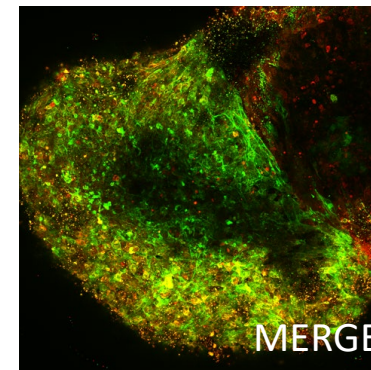
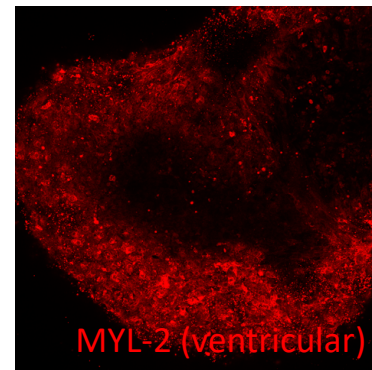
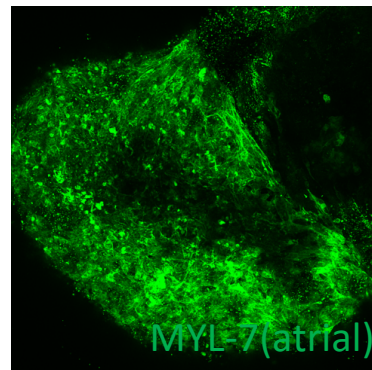
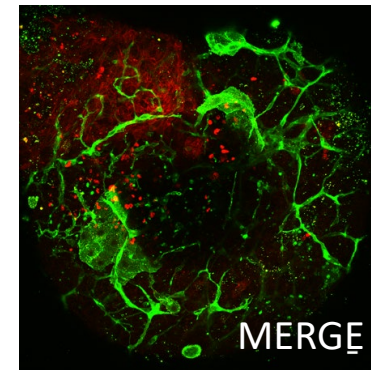
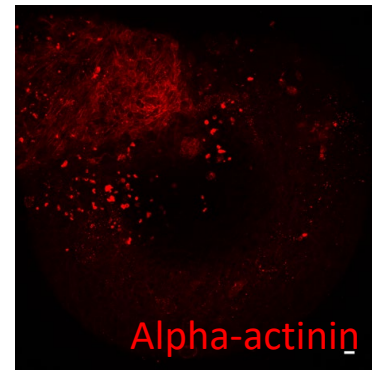
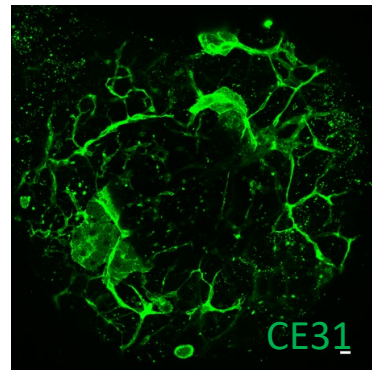


# Heart organoid\_ IBMS-iPSC-01-02

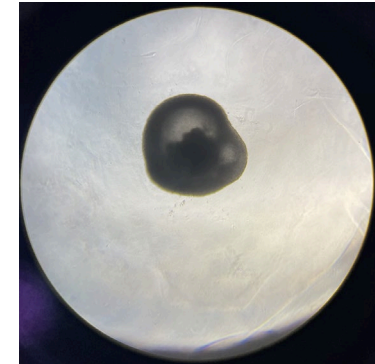
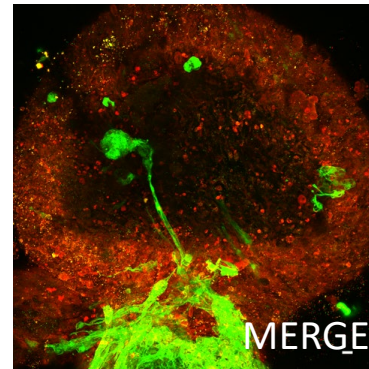
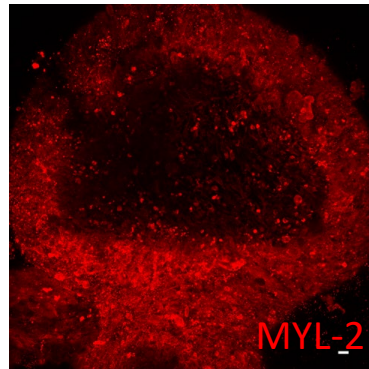
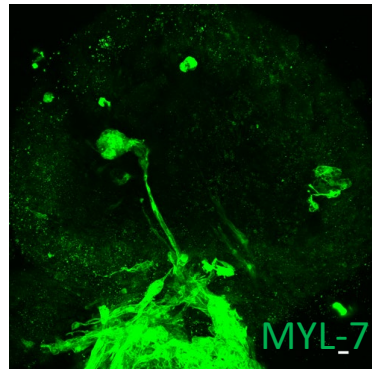
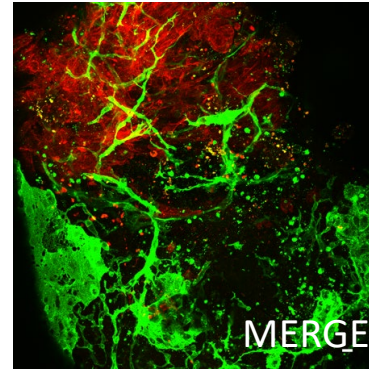
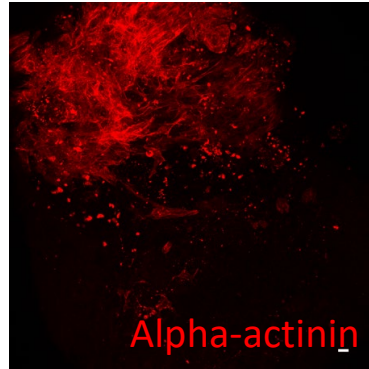
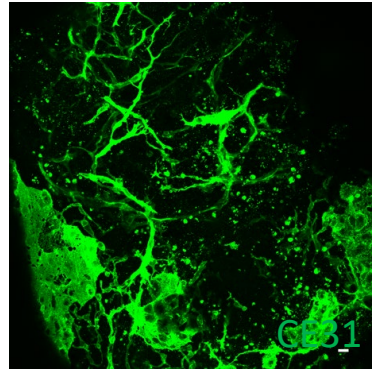
## Heart organoid, D10, cell number 7500, 10x



## Heart organoid, D30, cell number 7500, 20x



Heart organoid, D30, cell number 7500, 20x



# Cardiac spheroid (iPSC-derived CM + iPSC-derived EC + iPSC derived CF\_IBMS-iPSC-01-02)

Cardiac spheroid, D15, cell number 5000, 10x

